



EMERGENCY  
ASSISTANCE  
FOUNDATION

# Our mission.

Emergency Assistance Foundation partners with companies -- our Fund Partners -- to help their team members who are struggling through difficult times. Following an unexpected disaster or personal hardship, our employer-sponsored relief funds award grants that provide essential financial assistance on the path to recovery. **In fact, we award 5 grants every hour - helping a family in need every 12 minutes.**



## Lower costs, maximize relief.

Keep administrative costs low to maximize dollars sent to applicants in need.



## Maintain compliance.

Comply with regulations, including, but not limited to: IRS, SOC 2, GDPR, CCPA & LGPD.



## Streamline the grant process.

Shorten the time between application submission and grant award, and efficiently process a high volume of grants.



## Rapidly respond.

Rapidly respond to disasters and hardships occurring around the world.

## Our impact.

We are resourceful and fearless, ensuring that financial assistance reaches individuals and families in need as quickly as possible, no matter the location or obstacle.

**350+ funds administered.**

**12M+ employees supported.**

**411K+ families helped.**

**\$329M+ in assistance provided.**





## A global, multilingual team.

We have our pulse on every disaster event occurring around the world in real time, and our global team mobilizes instantly to get essential financial assistance directly into the hands of those impacted.

As financial first responders, we remain agile and adaptable by harnessing technology, developing scalable platforms and procedures, and constantly evaluating and improving our processes.





# Disaster & hardship relief funds.

Homes destroyed by devastating natural disasters.  
Insurmountable medical bills resulting from unexpected surgeries. Funeral expenses following the loss of loved ones.

The grants we award provide essential assistance – and offer hope – in the period between hardship and recovery.



Floods



Wildfires



Winter Storms



Serious  
Illness/Injury



Domestic  
Violence



Military  
Deployments



Hurricanes



Earthquakes



Tornadoes



Epidemic



Loss



Civil Unrest &  
Terrorist Attacks

## How our relief funds work.

We've perfected the art of establishing and maintaining a successful relief fund. As an efficient administrator, we independently manage all fund activities – including accepting donations, objectively reviewing grant applications, and awarding and distributing grants – while also maintaining legal and regulatory compliance.



### Fund design.

We'll help you configure the fund to meet your company's needs, with a unique fund name, specific eligible events and expenses, and a defined charitable class (those who can apply for a grant).



### Build donations.

Grow the relief fund through both corporate and individual contributions. Tax-deductible\* donations can be made through a variety of methods -- credit/debit cards, payroll deduction, unused PTO and more.



### Award grants.

Eligible individuals complete a dynamic application, with compassionate human assistance as needed. Our experts perform an objective review before awarding and processing tax-free\* grants through our trusted payment partners.



### Measure impact.

A relief fund advisor helps you maximize fund success, and our fund diagnostics dashboard provides important metrics to keep you informed and empower you to make strategic decisions.

*\* Donations and grants are tax-advantaged for those subject to United States IRS regulations; tax laws in other countries will vary.*

## Focus on the applicant experience.

We understand that our grant applicants are going through tough times, so we strive to make the entire process as seamless and stress-free as possible.



### Human interaction.

Our team provides compassionate human interaction, supported by advanced technology.



### Multilingual support.

Our team speaks over 20+ languages and has the ability to provide support in any language.



### 24/7 flexible communication.

Applicants can interact with us via live chat, texting, click-to-call, and a fund-specific email address and phone number -- available 24/7.



### Easy apply & status tracking.

Our confidential, user-friendly grant applications can be translated into any language and tracked in real-time by applicants.





## Introducing GrantTrack™

**Applicants can now easily track the real-time status of their grant applications using our proprietary GrantTrack™ platform.**

This dynamic new tool provides additional transparency and peace-of-mind during the grant process.



# CASE STUDY: HURRICANES HELENE & MILTON



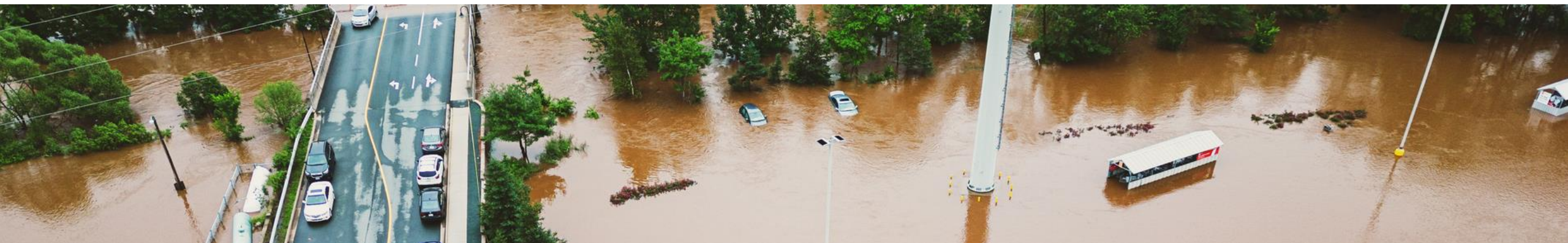
## Two catastrophic, historic disasters.

Hurricanes Helene and Milton devastated the southeastern United States, causing widespread destruction and casualties from Florida to the Appalachians.

EAF and our Fund Partners responded immediately to ensure that direct financial assistance reached impacted people and families quickly and efficiently, filling a void in traditional disaster response.

**31,000+**  
Families helped

**\$20M+**  
In financial assistance



# CASE STUDY: SOUTHERN CALIFORNIA WILDFIRES



## **A series of catastrophic, deadly wildfires.**

When fast-moving fires engulfed the Greater Los Angeles Area, causing mass destruction and evacuations, EAF and our Fund Partners responded immediately to ensure that direct financial assistance reached impacted people and families quickly and efficiently.

**1,300+**

Families helped

**\$1M+**

In financial assistance



# CASE STUDY: DOMESTIC VIOLENCE



## Supporting survivors of domestic violence through direct financial assistance.

Survivors of domestic violence often encounter unexpected financial challenges, including the costs of temporary housing, basic necessities, counseling services, and other essentials while they seek safety and rebuild their lives. Our employee relief funds are designed to provide critical financial assistance during these difficult times.

**2,035+**

Survivors helped

**\$3M+**

In financial assistance







**Take care of your own.**

[eafrelief.org](http://eafrelief.org) 

